

# To the Moon and Back: Working Together to Improve Outcomes

Mary E Morningstar, PhD

WTP 2023

mem28@pdx.edu

# NTACT:C

## National Technical Assistance Center on Transition: The Collaborative (NTACT:C)

*Supporting you to improve opportunities and outcomes for students and youth with disabilities.*

[More About Us](#)

<https://transitionta.org/>

Create an Account NOW!!

[News Blast Signup](#)

[Want Us to Help Your Team?](#)

[Have Questions? Contact Us.](#)



# What does “transition” mean to you?



# Transition Planning is....

“a period of floundering that occurs for at least the first several years after leaving school as adolescents attempt to assume a variety of adult roles in their communities” (Halpern, 1992)

Transition is the process of **movement through life phases**, as students move from the structure of one social institution or delivery system to that of another (OSERS, 1984)



# IDEA 2004

The Individuals with Disabilities Education Act (IDEA) was enacted by the federal government to ensure that all children with disabilities are provided with **“equality of educational opportunity, full participation, independent living, and economic self-sufficiency.”**

# Where are we Today?

## Begin with the End In Mind

- ✓ High quality transition services
- ✓ Challenge to meet the demands of adulthood
- ✓ Inspire through opportunities to realize dreams for future
- ✓ Collective action & collaboration, draw on that power





# So what's the big deal?

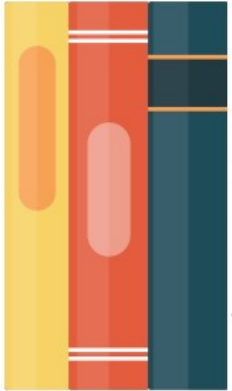
# EXPECT: High Expectations Lead to...

Families	Academics, integrated competitive employment, postsecondary education, community living
Teachers	Student academic achievement
Students	Postsecondary education, employment, financial self-sufficiency
Practitioners	Seamless delivery of transition services leading to higher paying jobs that match career interests and abilities



# Transition Timeline

## What's Next?



### High School Transition Planning

#### Mapping the Future

Check these milestones to ensure high school paves a pathway for young adult success and achievement!

DVR: Division of Vocational Rehabilitation  
DSB: Department of Services for the Blind  
DDA: Developmental Disabilities Administration  
TVR: Tribal Vocational Rehabilitation

Get more tips by going to [wapave.org](https://wapave.org) and typing: **Transition Planning Toolkit** in their search bar.



Ages 13 - 14

Student begins High School and Beyond Plan in Middle School—a WA State requirement for all students.



Ages 15-16

IEP includes a Transition Plan, aligned with High School and Beyond Plan. Student is a member of the IEP team, which plans a pathway toward a diploma and target graduation date.

PAVE



Ages 17-18

Coursework, IEP, High School and Beyond Plan, DDA/DVR all support student's life goals and progress toward a diploma.



Age 16

Get state identification card. Consider Pre-Employment Transition Services from DVR/DSB or School-to-Work planning with DDA.



Age 18

Register to vote! Participate in Commencement and senior year activities, regardless of when diploma is earned.



Ages 18-19

Student may continue education in a high school transition program.



Ages 20-21

Student earns a diploma. May apply for individualized employment support from DVR/TVR/DSB or DDA.

<https://wapave.org/whats-next-high-school-transition-planning-timeline/>

# ENGAGE: How it is Operationalized



Early Planning  
with Families &  
Individuals



Inclusive,  
Rigorous &  
Relevant  
Educational  
Experiences



Supports &  
Services Tied  
to Outcomes



Practitioners  
Knowledgeable  
of EBPPS

# EMPOWER

Self-Advocacy

Supported  
Decision-making

Youth Leadership

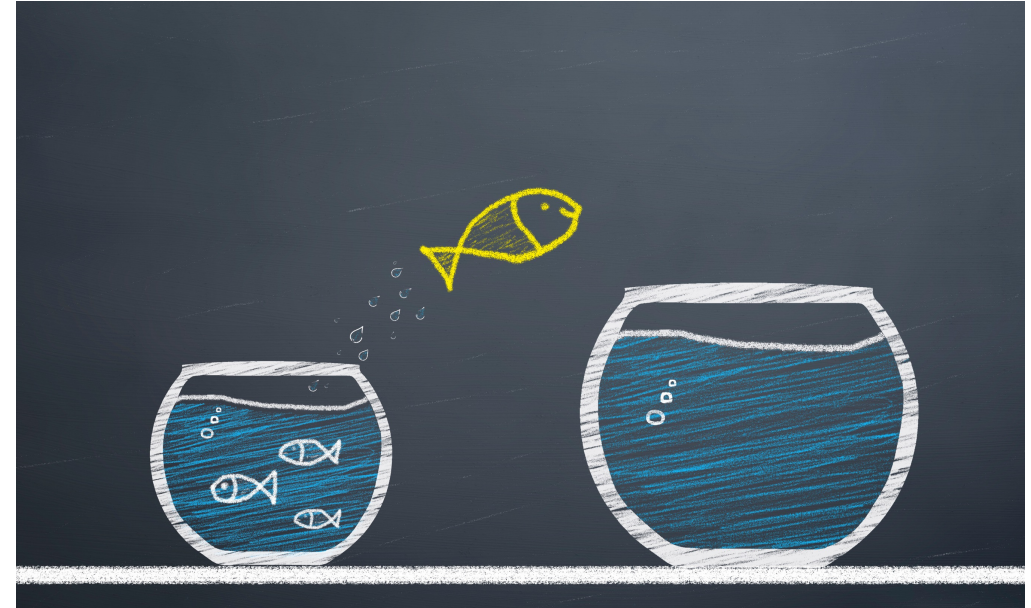
Re-engaging Youth

Collaboration

Family supports

Community  
Partnerships

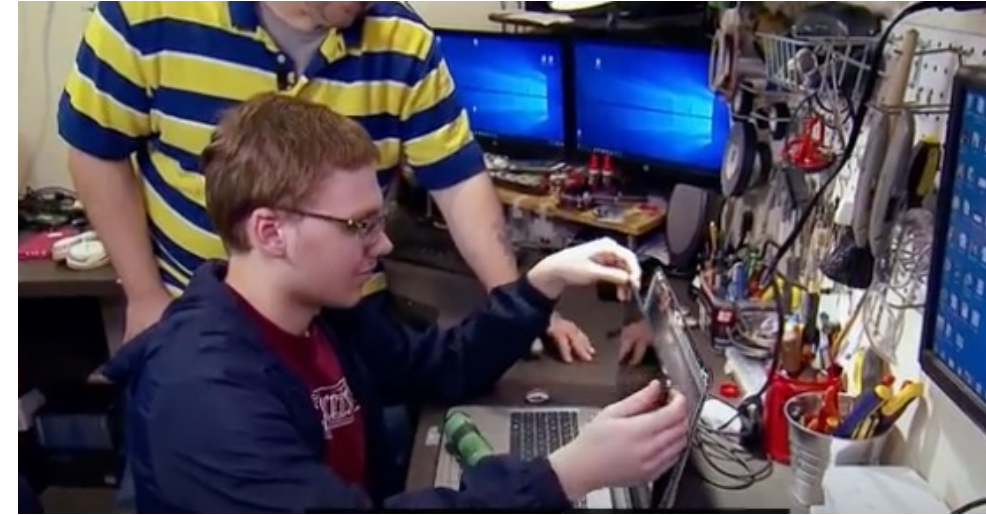
# Why are Partnerships Important?



# Building Relationships & Developing Trust

*When two parties come together for the common good of a school or to enhance student learning.*

*Partners can include anyone who is interested in or committed to enriching educational experiences for students, families, schools, and the community.*



## Partnerships

# Employment

## How do we get there?

- 1 Work-Based Learning
- 2 Pre-ETS & Transition Services
- 3 Inclusive “real internships”
- 4 Career Development & Counseling

# Postsecondary Education

## How do we get there?

- 1 MS/HS – Access to Gen Ed; programs like AVID
- 2 Self-Advocacy
- 3 Accommodations & Assistive Technology
- 4 Think College

# Community Engagement & Living

## How do we get there

- 1 Inclusion in and out of school
- 2 Flexibility in services
- 3 Adult Roles & Responsibilities
- 4 Self-Advocacy, Supported Decision Making



# Wrap Up



PURSUING  
THEIR  
**DREAMS**

- ✓ The end game should always be about \_\_\_\_\_ (who?)
- ✓ Working together will reduce duplication and fill in the gaps \_\_\_\_\_ (who?) will be better prepared!
- ✓ How can YOU Be a Valued Partner
  - Communicate
  - Build trust
  - Be consistent
  - Individualize supports
  - Share Information
  - Ask Questions
  - Share Power with \_\_\_\_\_ (who?)

#transitionTA | transitionTA.org | [contact-collab@uncc.edu](mailto:contact-collab@uncc.edu)



Office of Special Education Programs  
U.S. Department of Education

The contents of this presentation were developed under a grant (H326E200003) from the Department of Education. However, those contents do not necessarily represent the policy of the Department of Education, and you should not assume endorsement by the Federal Government.